

# Egg Breakout for Hatchery Efficiency



**R Keith Bramwell, MS, PhD**

*Director Hatchery Consultancy, Embryologist  
Jamesway Incubator Company*

# Summary

This lesson, led by Dr. Keith Bramwell from Jamesway Incubator Company, focuses on the **role of egg breakout analysis in improving hatchery efficiency**. The goal is to use hatch residue data to evaluate incubation performance and identify factors affecting embryo development and hatch success.



The session bridges scientific principles and practical hatchery management.

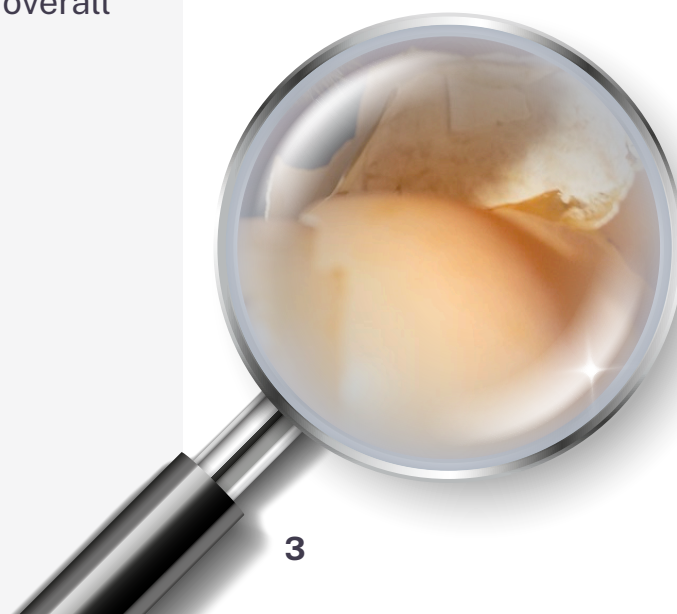


# The Importance of Hatch Residue Analysis

**Residue breakout** provides a **post-hatch diagnostic tool** for understanding incubation outcomes. By systematically analyzing unhatched eggs, hatchery professionals can identify trends, detect fertility issues, evaluate embryonic mortality stages, and assess overall process effectiveness.

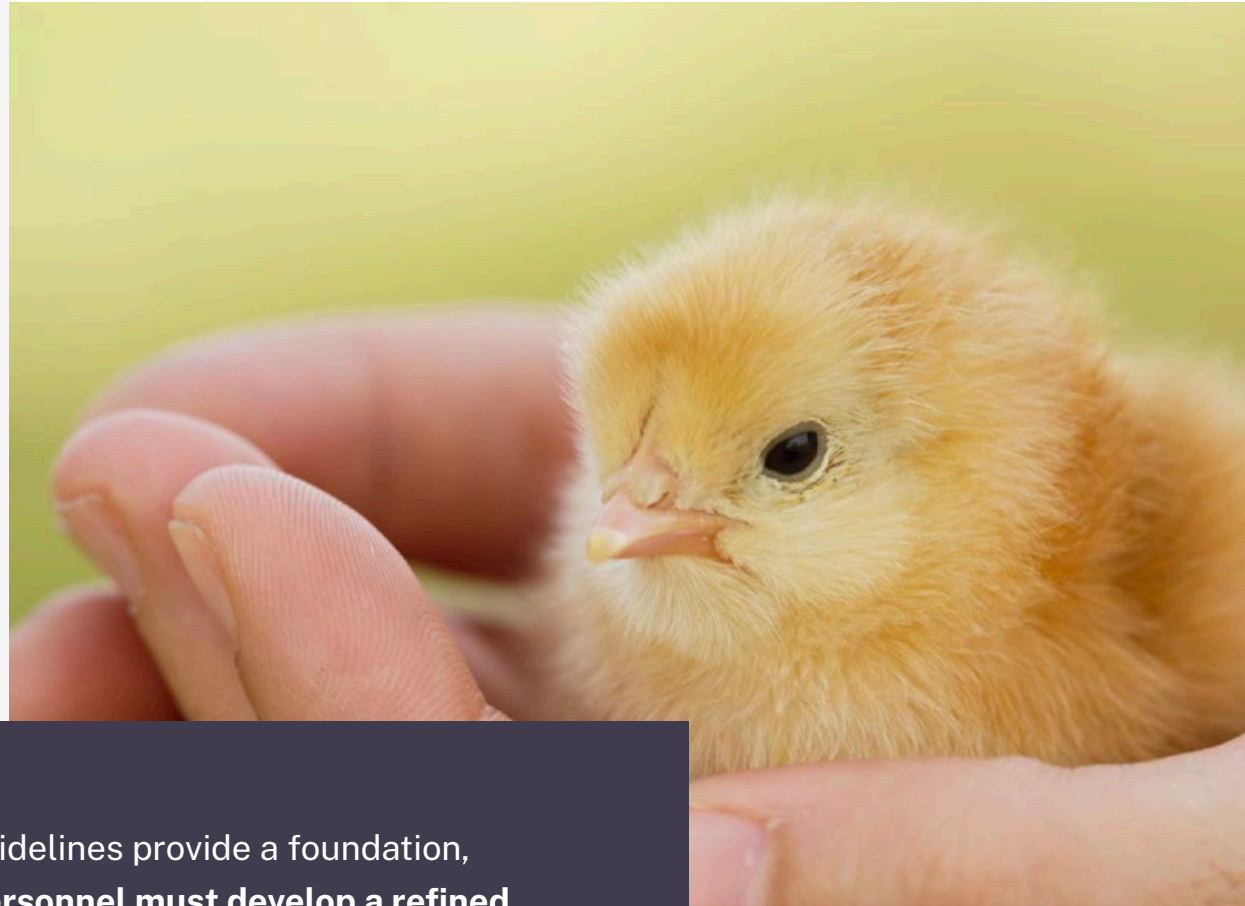


Rather than relying solely on hatch rate percentages, breakout data allows a **deeper understanding of root causes** and helps guide necessary adjustments.



# Science and Art of Incubation

While incubation is grounded in biological science, **practical success depends on adapting to real-world variability.** Each hatch may present unique challenges due to breeder flock conditions, egg quality, equipment, or environmental factors.



Manuals and guidelines provide a foundation, but **hatchery personnel must develop a refined understanding of their specific context to make optimal decisions.**

# Egg Breakout Procedure

Dr. Bramwell outlines the systematic procedure for conducting egg breakout.

Eggs that fail to hatch are classified based on fertility status, embryonic development stage, contamination signs, and shell integrity.



**Fertile vs. infertile distinction is crucial**, followed by segmentation of **early, mid, or late embryo death**.



**Uniform recording methods and regular breakout evaluations** are essential to track consistency and compare across hatches.

# Applications in Hatchery Management

Findings from egg breakout guide several key management decisions.



For example, a **high percentage of early embryo deaths** may indicate issues with storage time, incubator preheating, or initial temperature profiles.

Late deaths may signal ventilation or turning problems. Infertility trends could trace back to breeder age, male-to-female ratio, or semen viability. Breakout analysis links incubation outcomes to upstream breeder flock management and downstream chick quality.



# Continuous Improvement and Benchmarking

Routine egg breakout contributes to continuous improvement. It creates benchmarks to **evaluate hatchery performance over time** and promotes proactive adjustments. Well-documented breakout data help identify chronic issues, measure effects of intervention, and provide a quality assurance feedback loop within the operation. It also facilitates knowledge sharing across hatchery teams and with external consultants.



## ACCURACY IN DATA COLLECTION

A critical aspect of effective egg breakout analysis is maintaining **complete and accurate records**. Dr. Bramwell emphasizes that each egg's fate must be accounted for. For example, if a tray has 168 eggs and 153 chicks hatch, then the remaining 15 must be thoroughly classified — whether infertile, early or late embryo mortality, or culled chicks. Any discrepancy in these numbers can compromise the integrity of hatchery evaluations.



Every egg must be documented and categorized appropriately to ensure consistency and trustworthiness in analysis.



## USING BREAKOUT DATA FOR ROOT CAUSE ANALYSIS

By aggregating data from multiple hatchings, hatchery personnel can **observe trends and detect persistent issues**. A spike in early embryo mortality might suggest problems in egg storage or incubation startup parameters. Frequent late embryo deaths might point to inadequate ventilation, CO<sub>2</sub> buildup, or improper turning. This systemic view turns breakout data into a proactive diagnostic instrument rather than a post-mortem report.



## ADAPTING PRACTICES TO FLOCK AND FACILITY CONDITIONS

Dr. Bramwell notes that hatchery performance must be interpreted in the context of breeder flock age, breed, flock health, and even local management practices. What works for one hatchery may not work for another due to biological and logistical variability.

**Egg breakout allows customization** — adjusting set points, ventilation schedules, or handling procedures — based on ongoing data-driven insights rather than standardized assumptions.



## TRAINING AND TEAM ENGAGEMENT

Accurate and effective breakout analysis requires **commitment** from hatchery staff. Dr. Bramwell encourages training breakout technicians not just in egg classification, but also in understanding the ‘why’ behind each classification. This builds a culture of **attention to detail** and fosters a sense of ownership in improving chick quality and hatchery efficiency.

Teams are more likely to engage with the process when they understand its operational relevance.



## CLOSING THE LOOP: APPLYING DATA FOR IMPROVEMENT

Hatcheries must not only collect data but use it actively. Dr. Bramwell insists that breakout reports should feed back into management decisions — adjusting machine settings, handling processes, or breeder flock practices. Over time, this feedback loop leads to **improved embryo viability, better chick uniformity, and overall operational gains.**



## CONCLUSION

In this second part, Dr. Bramwell reinforces that **hatchery efficiency** is directly tied to how well we **understand and act on breakout data.** Success lies not in simply tracking mortality but in using this information to refine every step of the hatching process. Egg breakout becomes not just a tool, but a **philosophy of proactive, precision-based hatchery management.**

# Conclusion

**Egg breakout** is a **powerful** yet underutilized **tool** in hatchery management. By embracing both its diagnostic potential and its role in daily operations, hatcheries can enhance efficiency, reduce embryo loss, and ultimately improve chick viability and productivity.



**Dr. Bramwell emphasizes that effective breakout requires training, consistency, and integration into standard hatchery routines.**



# Thank you!

## **Grupo de Comunicación Agrinews S.L.**

*Avinguda de Jaume Recoder, 17, 08301 Mataró,  
Barcelona (España)*

*[info@grupoagrinews.com](mailto:info@grupoagrinews.com)*

*Tel: +34 93 115 44 15*